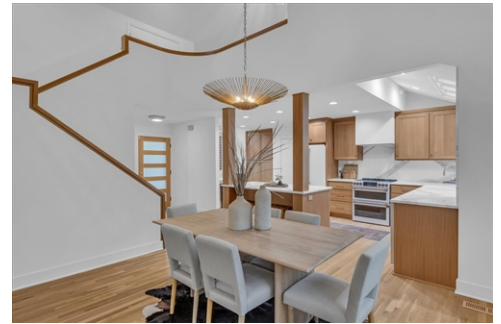




\$ 899,500



7854 Howe Cir, Prairie Village, KS 66208

- » Beds: 3 | Baths: 3 Full, 1 Half
- » MLS #: 2483635
- » Single Family | 2,772 ft² | Lot: 5,498 ft²
- » More Info: 7854HoweCir.IsForSale.com



Randi Pereira
REALTOR
 (913) 424-6282 (Call / Text)
randi@therecgroupinc.com
<https://TheRECGroupInc.com>

KW Kansas City Metro
 4200 Somerset Drive
 Suite 101
 Prairie Village, KS 66208
 (913) 825-7500

Remarks

Recently staged and new photos highlight this award-winning remodel nestled within the Mission Pines community. Thoughtfully redesigned to harmonize space, functionality, and luxurious finishes, this home exceeds all expectations. The kitchen is a dream encapsulated in gorgeous custom natural woodwork, all new GE Caf appliances, tons of light and stunning Cambria quartz counter tops. Every detail has been carefully crafted, from the sun-drenched banquette and pantry area to the seamless transitions between new and newly finished flooring to the distinctive lighting throughout....all set against a neutral palette that flows from one room to the next. The main level primary suite includes a vaulted ceiling, newly renovated bathroom, convenient laundry area discreetly tucked within the walk-in closet and a private new deck. The second level features a versatile loft area, an additional bedroom and full bath. Descend to the lower level, where a transformative apartment awaits, complete with living space, kitchenette, full bathroom, bedroom and additional laundry. This beauty is not just on the outside, but also includes all new windows and sliding doors. new front door. new outdoor decks. new furnace. new HWH. new carpet and more! If you're looking for a professionally curated home

